

How can we strengthen wilderness fire management?

Julia K. Berkey

W.A. Franke College of Forestry and Conservation, University of Montana, Missoula, MT



Background





Lessons learned



Wilderness fire is important!





Wilderness fire is important!



Ecologically



Wilderness fire is important!



Guiding management

Long-term fire management

Outside & inside wilderness



Importance of personality



A scenic landscape photograph of a mountain valley. In the foreground, a river flows through a rocky, light-colored bed, surrounded by dense evergreen forests. A tall, thin, dark tree stands prominently in the center. The middle ground shows rolling hills and valleys covered in green vegetation and scattered trees. In the background, large, rugged mountains rise under a hazy sky. The text "How can we strengthen the wilderness fire program?" is overlaid in a large, black, sans-serif font on a semi-transparent white rectangular background in the upper right portion of the image.

How can we strengthen the
wilderness fire program?

A scenic landscape photograph of a mountain valley. In the foreground, a river flows through a rocky, light-colored bed, surrounded by dense evergreen forests. The middle ground shows a vast valley filled with green trees and vegetation. In the background, majestic mountains rise, some with patches of snow or light-colored rock. The sky is overcast and grey. The text is overlaid on the upper portion of the image.

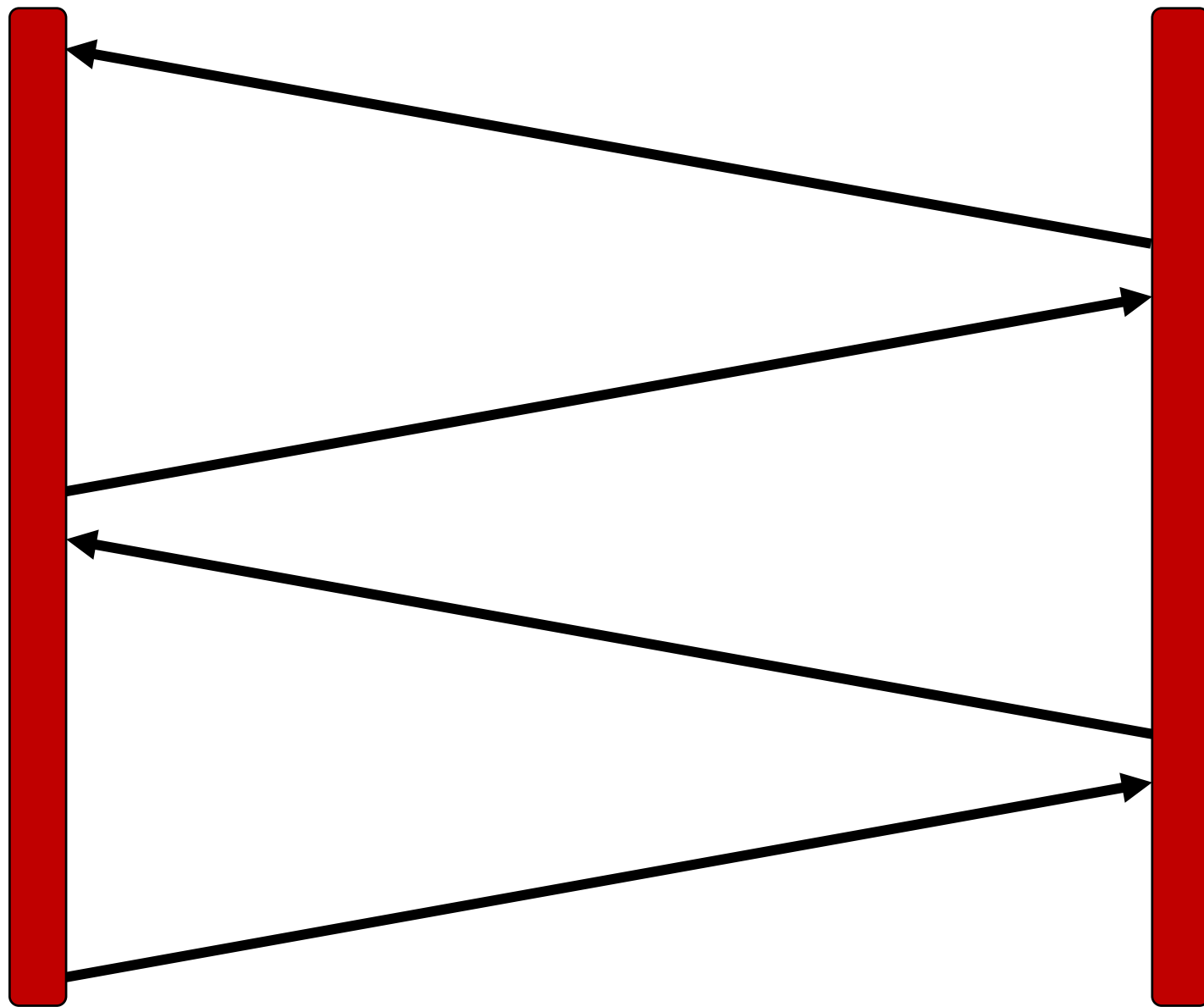
How can we strengthen the
wilderness fire program?

*“Is this program by design,
or is this program by chance?”*



“Leadership needs to
provide clear intent...
Develop the sideboards
and realize there is no
straight line down”

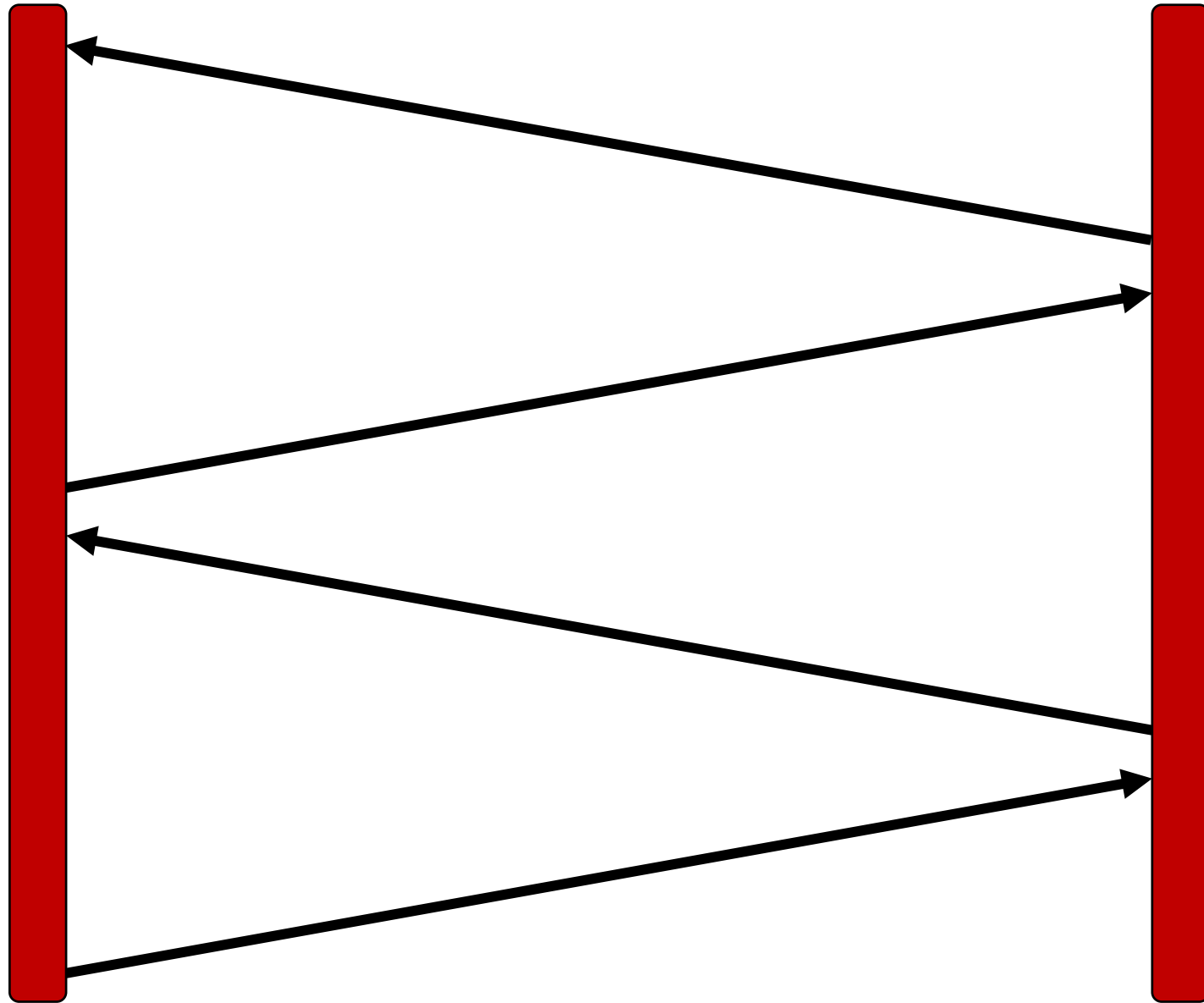






Policy

- Budget changes
- Fire management modules
- Lessen career risk
- Provide incentives



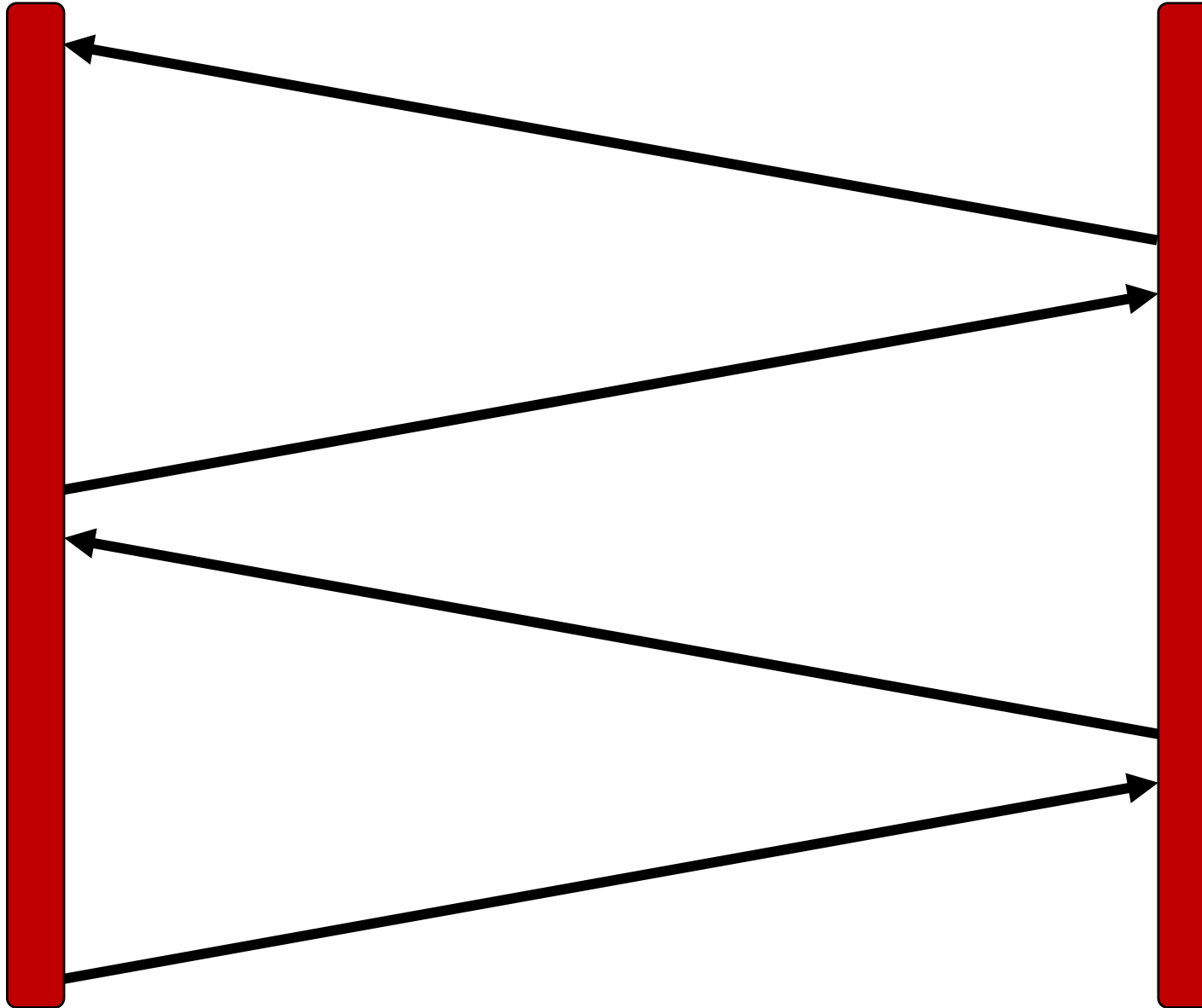


Policy

- Budget changes
- Fire management modules
- Lessen career risk
- Provide incentives

Outreach

- State support
- Define goals
- Emphasize wilderness
- Public education





Foster wilderness ethic

- Mentorships
- Ecological training





Foster wilderness ethic

- Mentorships
- Ecological training

Long-term management skills

- Qualifications
- Mentorships
- Transfer of knowledge





Foster wilderness ethic

- Mentorships
- Ecological training

Long-term management skills

- Mentorships
- Qualifications
- Transfer of knowledge

Investment from wilderness program

- Training





Foster wilderness ethic

- Mentorships
- Ecological training

Long-term management skills

- Mentorships
- Qualifications
- Transfer of knowledge

Investment from wilderness program

- Training

Transparency with public



Policy

- Budget changes
- Fire management modules
- Lessen career risk
- Provide incentives

Foster wilderness ethic

- Mentorships
- Ecological training

Long-term management skills

- Mentorships
- Qualifications
- Transfer of knowledge

Investment from wilderness program

- Training

Transparency with public

Outreach

- State support
- Define goals
- Emphasize wilderness
- Public education



Acknowledgements

- Andrew Larson
- Carol Miller & the Aldo Leopold Wilderness Research Institute
- All interview subjects
 - Gene Benedict
 - Sonny Lasalle
 - Dave Bunnell
 - Norman Kamrud
 - Rich Lasko
 - Orville Daniels
 - Bob Mutch
 - Byron Bonney
 - Stu Hoyt
 - Deb Mucklow-Starling
 - George Weldon
 - Jack Kirkendall
 - Jerry Williams
 - Mike Munoz
 - Seth Carbonari
 - Dave Campbell
 - Tim Love
 - Carl Seielstad
 - Jim Habeck

Questions? Thoughts?

